

## GWST-LF Large Flange Threaded Insert

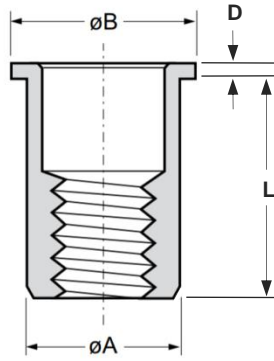
Steel · Large flange · Round · Open end  
M3 - M12

### Features

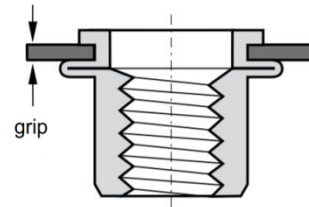
- Designed to provide load bearing threads in thin sheet materials
- Large flange head provides a load bearing surface and reinforces the hole to prevent push-out

### Material

- Steel, zinc plated



Before Placement



After Placement

Part No.	Thread Size	Grip Range		Hole Size	$\phi A$	$\phi B$	D	L
		min.	max.	+0.1	-0.02/-0.15	$\pm 0.35$	$\pm 0.15$	$\pm 0.35$
GWST-LFM3-0520	M3	0.5	2.0	5.0	5.0	8.0	0.75	9.75
GWST-LFM3-2030		2.0	3.0					10.75
GWST-LFM4-0530	M4	0.5	3.0	6.0	6.0	10.0	0.75	10.75
GWST-LFM4-3045		3.0	4.5					12.25
GWST-LFM5-0530	M5	0.5	3.0	7.0	7.0	11.0	1.0	12.0
GWST-LFM5-3055		3.0	5.5					15.0
GWST-LFM6-0530	M6	0.5	3.0	9.0	9.0	13.0	1.5	14.5
GWST-LFM6-3055		3.0	5.5					16.5
GWST-LFM6-5580		5.5	8.0					19.0
GWST-LFM8-0530	M8	0.5	3.0	11.0	11.0	16.0	1.5	16.0
GWST-LFM8-3055		3.0	5.5					18.5
GWST-LFM8-5580		5.5	8.0					21.5
GWST-LFM10-0835A	M10	0.8	3.5	12.45	12.4	18.5	2.25	19.75
GWST-LFM10-3560A		3.5	6.0					22.75
GWST-LFM10-0835		0.8	3.5					21.0
GWST-LFM10-3560	M10	3.5	6.0	13.0	13.0	19.0	2.0	24.0
GWST-LFM10-6085		6.0	8.5					27.0
GWST-LFM12-1040	M12	1.0	4.0	16.0	16.0	23.0	2.0	25.0
GWST-LFM12-3070		3.0	7.0					28.0

Thread Size	Max. torque	Pull-out	Torque-to-turn	Shear strength
	Nm max.	Kn	Nm	kN
M3	> ~2.0	> ~5.8	~1.8	~1.9
M4	> ~7.5	> ~10.8	~2.7	~2.6
M5	> ~10.0	> ~12.0	~4.7	~3.5
M6	> ~19.0	> ~21.0	~7.0	~5.0
M8	> ~50.0	> ~33.0	~13.0	~6.0
M10	> ~70.0	> ~40.0	~15.0	~8.0
M12	> ~120.0	> ~63.0	~32.0	~11.5